

UTEK

Lean Production Division

Osaka Japan
Panasonic Corporation
Manufactured 2019
CE

DRILL&DRIVER
Model No. EY7410
3.6V --- LOW n_o: 200min⁻¹
HIGH n_o: 600min⁻¹
Made in Japan

TOOL HOLDER
PORTA
UTENSILI

www.utekvision.com

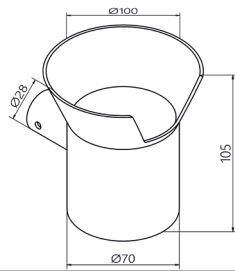
SISTEMA MODULARE

TOOL HOLDER

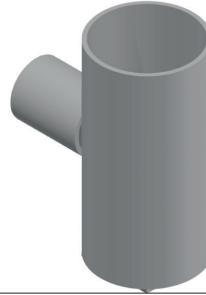
UT-TH01



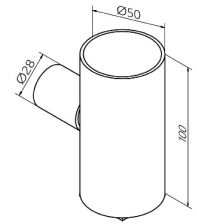
PORTA UTENSILI ZINCATO
Ø100 FONDO PASSANTE



UT-TH02



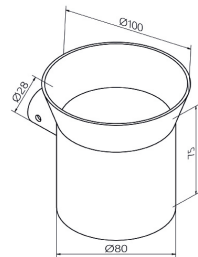
PORTA UTENSILI ZINCATO
Ø50 FONDO CHIUSO



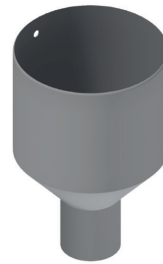
UT-TH03



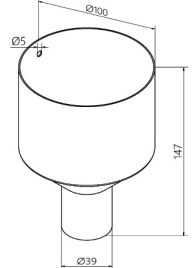
PORTA UTENSILI ZINCATO
Ø100 FONDO PASSANTE



UT-TH04

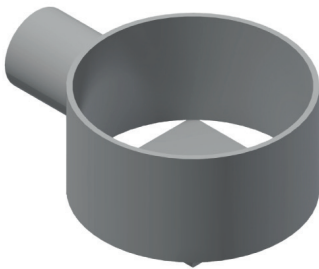


PORTA UTENSILI ACCIAIO
Ø105

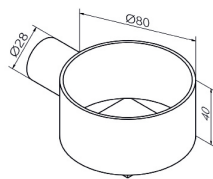


2

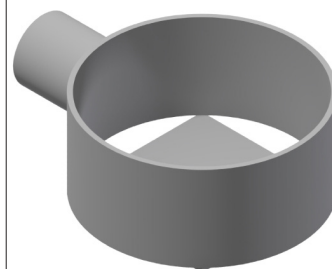
UT-TH05



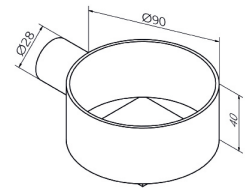
PORTA UTENSILI ZINCATO
Ø80



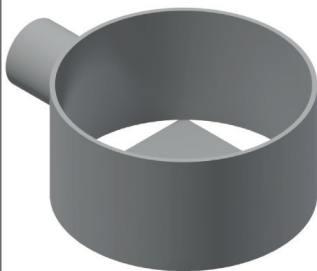
UT-TH06



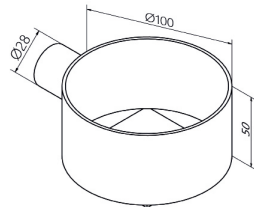
PORTA UTENSILI ZINCATO
Ø90



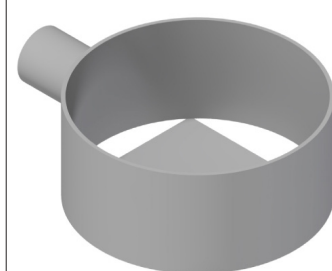
UT-TH07



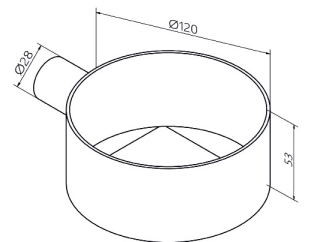
PORTA UTENSILI ZINCATO
Ø100 FONDO CHIUSO



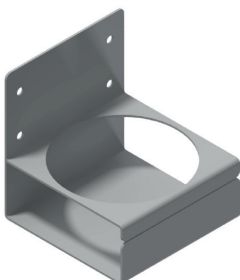
UT-TH08



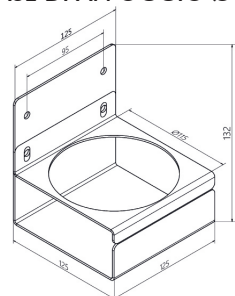
PORTA UTENSILI ZINCATO
Ø120 FONDO CHIUSO



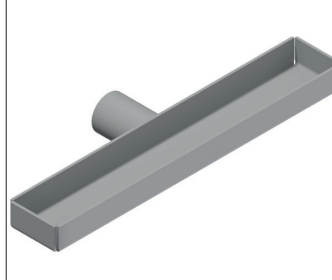
UT-TH09



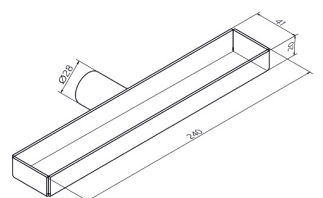
BASE DI APPOGGIO Ø95



UT-TH10

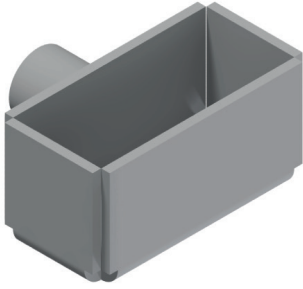
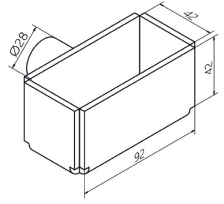
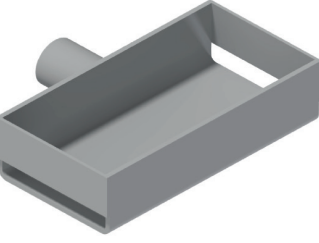
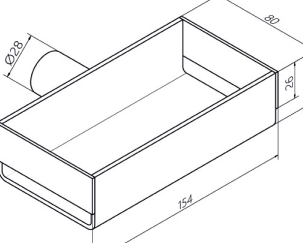
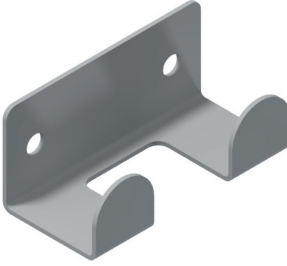
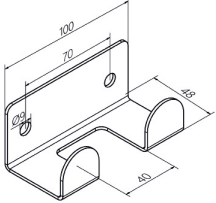

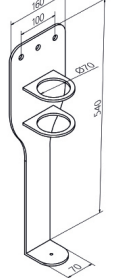
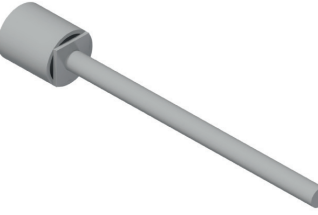
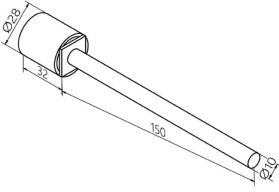

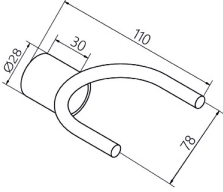

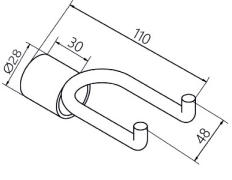
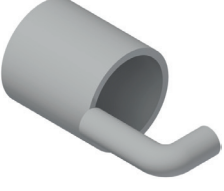
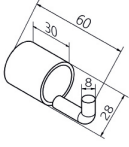
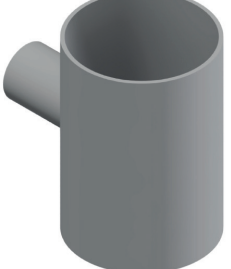
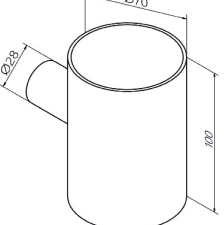

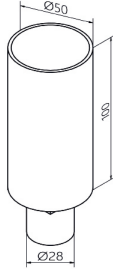


PORTA UTENSILI ZINCATO
240X41X20 MM



SISTEMA MODULARE

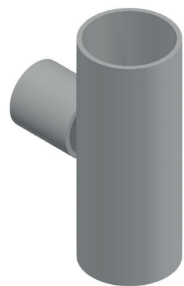
TOOL HOLDER

UT-TH11	PORTA UTENSILI ZINCATO 100X50X50MM	UT-TH12	PORTA UTENSILI ZINCATO 150X80X40MM
			
UT-TH13	PORTA MARTELLO	UT-TH14	PORTA SILICONE
			
UT-TH15	PERNO PORTA UTENSILI L. 150MM	UT-TH16	PORTA UTENSILI A U
			
UT-TH17	GANCIO PORTA UTENSILI DOPPIO L.110MM	UT-TH18	GANCIO PORTA UTENSILI L.30x h.19 mm
			
UT-TH19	PORTA UTENSILI ZINCATO Ø70 FONDO PASSANTE	UT-TH20	PORTA UTENSILI ZINCATO Ø50
			

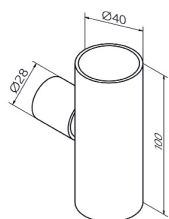
SISTEMA MODULARE

TOOL HOLDER

UT-TH21



PORTA UTENSILI ZINCATO
Ø40 FONDO PASSANTE



UT-TH22



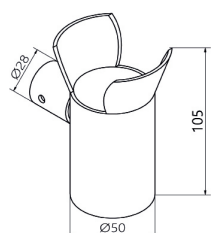
PORTA UTENSILI ZINCATO
Ø40



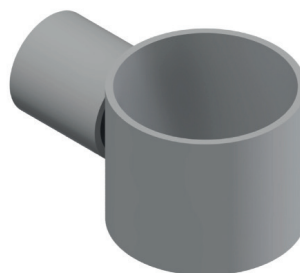
UT-TH23



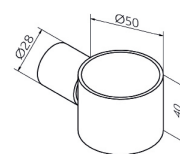
PORTA UTENSILI ZINCATO
Ø50



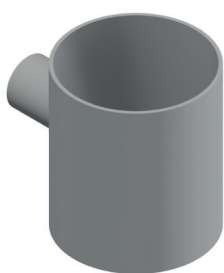
UT-TH24



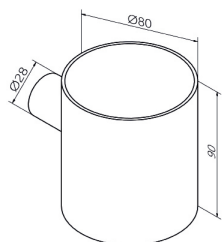
PORTA UTENSILI ZINCATO
Ø50 FONDO PASSANTE



UT-TH25



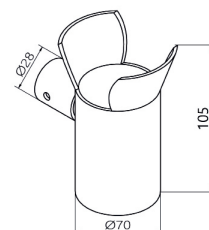
PORTA UTENSILI ZINCATO
Ø80 FONDO PASSANTE



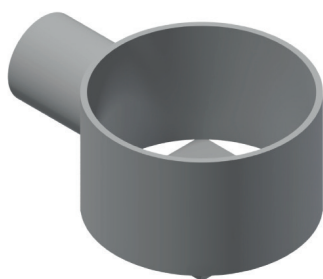
UT-TH26



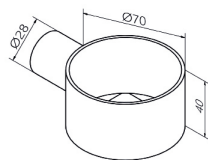
PORTA UTENSILI ZINCATO
Ø70



UT-TH27



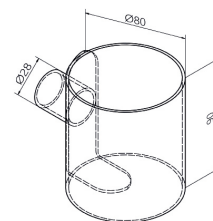
PORTA UTENSILI ZINCATO
Ø70 FONDO CHIUSO



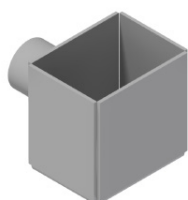
UT-TH28



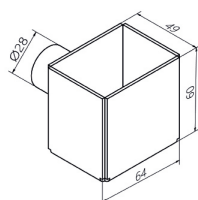
PORTA UTENSILI ZINCATO
Ø80 FONDO CON
APPOGGIO



UT-TH29



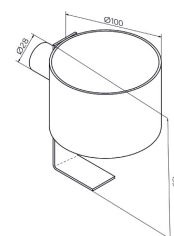
PORTA UTENSILI ZINCATO
64X49X60MM



UT-TH30



PORTA UTENSILI ZINCATO
Ø100 FONDO
CON APPOGGIO



SISTEMA MODULARE

TOOL HOLDER

UT-TH31

PORTA UTENSILI ZINCATO
Ø80 FONDO CHIUSO

UT-TH32

GANCIO PORTA UTENSILI
155X104MM

UT-TH33

GANCIO PORTA UTENSILI
155X104MM

UT-TH34

PORTA UTENSILI ZINCATO
Ø70 CON SUPPORTO

UT-TH35

GANCIO PORTA UTENSILI
116X40MM

UT-TH36

PORTA UTENSILI ZINCATO
Ø80 FONDO CON
APPOGGIO

UT-TH37

PORTA UTENSILI ZINCATO
73X60X28MM

UT-TH38

GANCIO PORTA UTENSILI
DOPPIO L.93MM

UT-TH39

PORTA UTENSILI ZINCATO
100X43MM

UT-TH40

GANCIO PORTA UTENSILI
MAGNETICO Ø50



Utek srl - Via Luciano Lama, 8 - Villa Argine
42023 Cadelbosco di Sopra (RE) - Italy
Tel. +39.0522.958945 - Fax +39.0522.912181
info@utekvision.com - www.utekvision.com

Utek Deutschland - Germany
kontakt@utekvision.de - www.utekvision.de