

UTEK

Lean Production Division

TM
LEAN
TRAINING FACTORY

LEAN

TOOLS

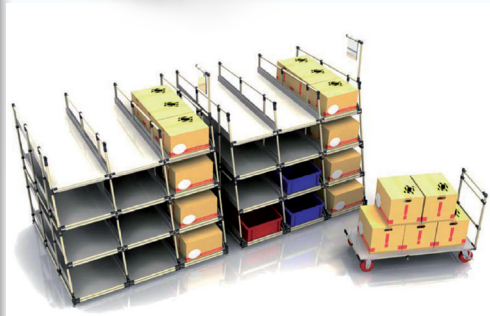
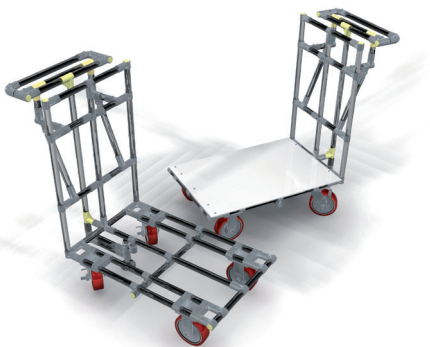
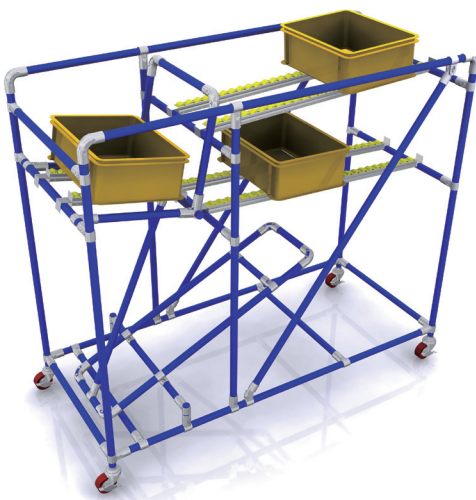
TRAINING FACTORY

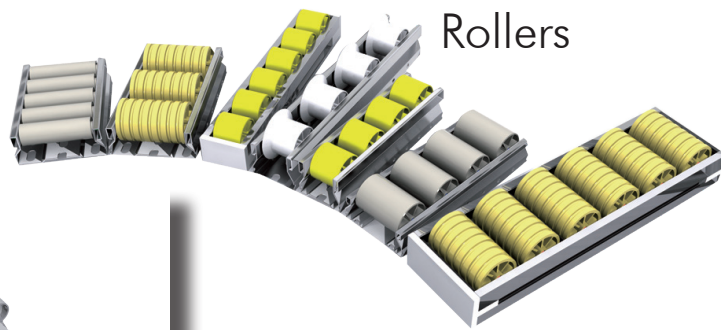
www.utekvision.com



MODULAR SYSTEM

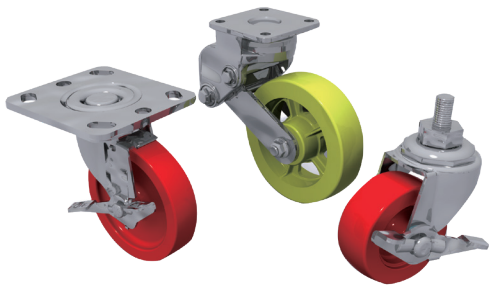
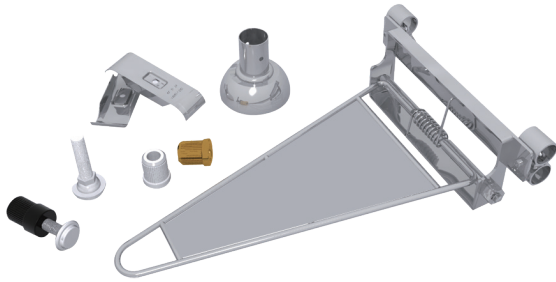
- Easy to use
- Reusable
- Light weight
- High strenght



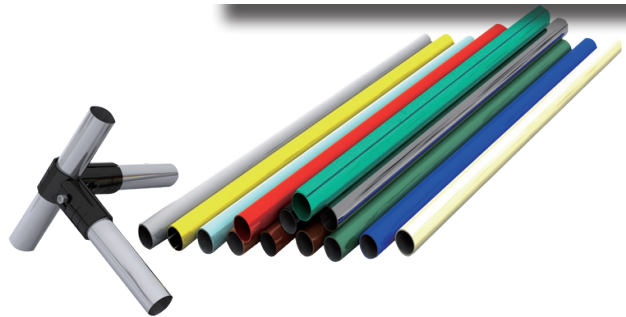


Rollers

Accessories



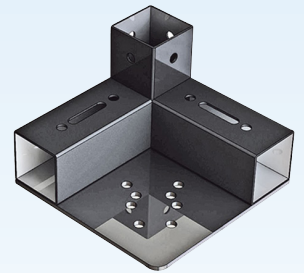
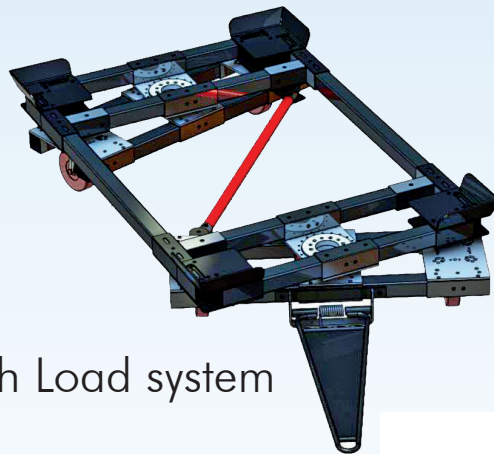
Wheels



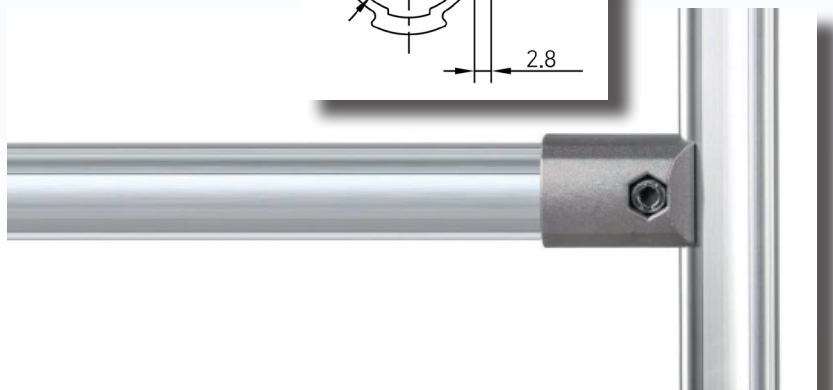
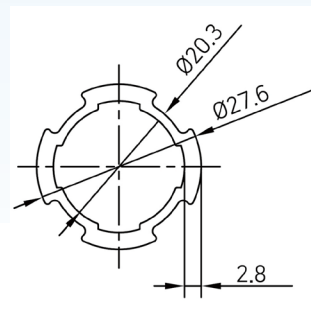
Pipes and Metal joints



High Load system



Pallet cart HD





- Easy to use
- Fast installation
- Identification by colours
- Cheap

VISUAL MANAGEMENT

Container labeling

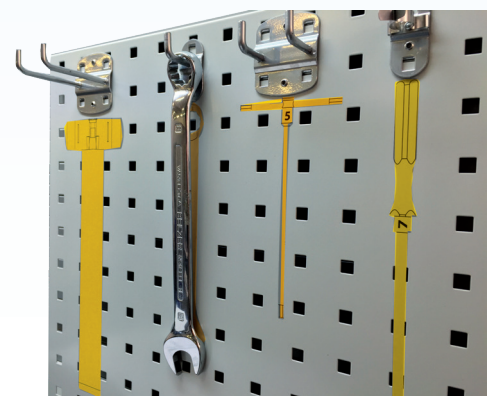


Modular identification system

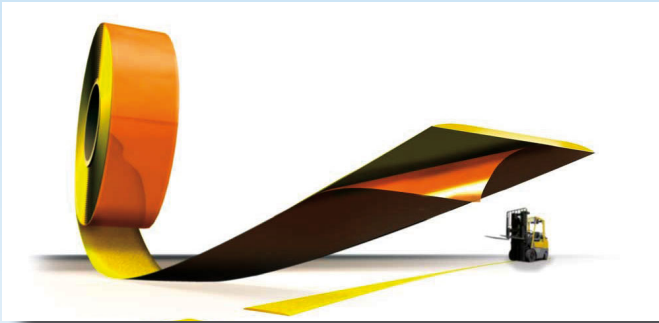
Rack identification



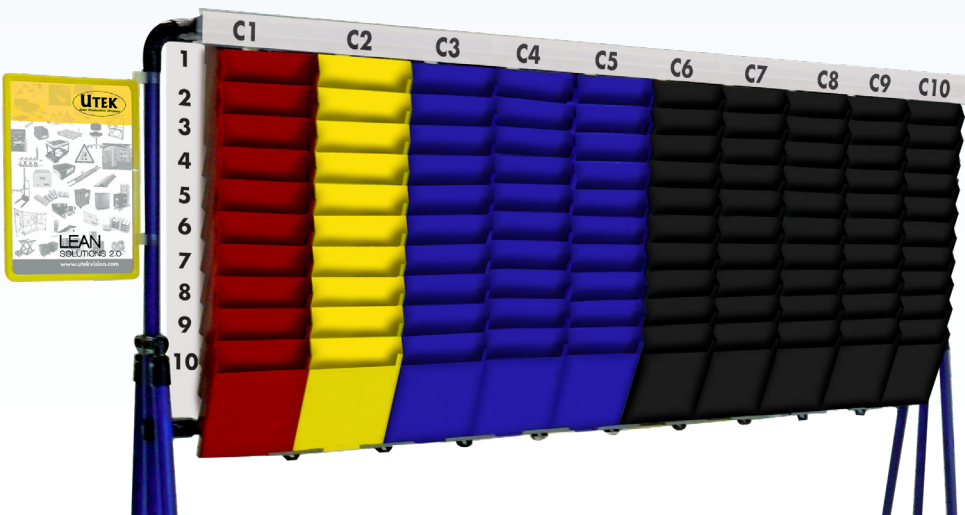
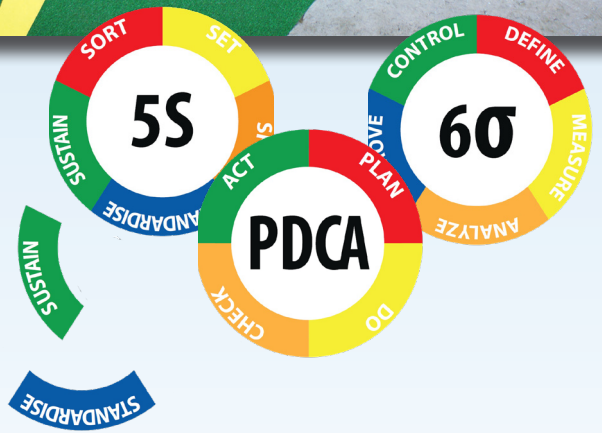
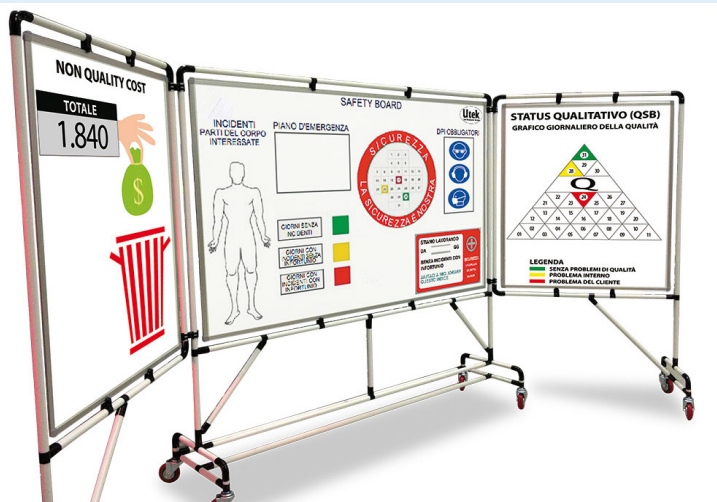
Adhesive symbols



Floor Marking



Visual Board





- Space optimization
- Wide range
- Kanban predisposition

BOXES

Bin



VDA-KLT



Shadow Board Foam

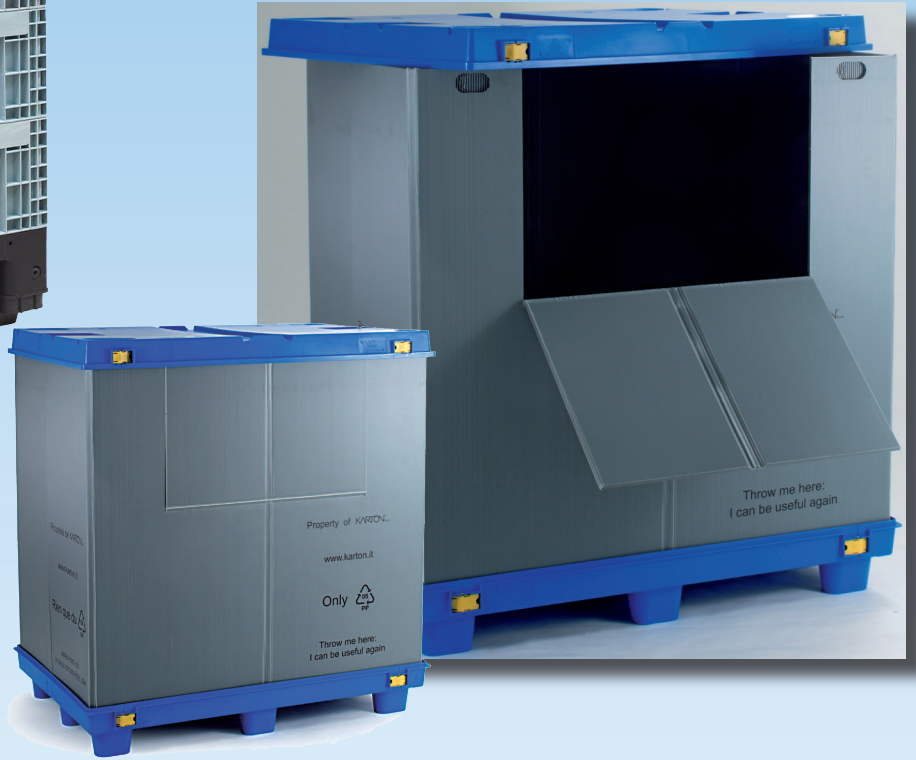


Kanban Boxes

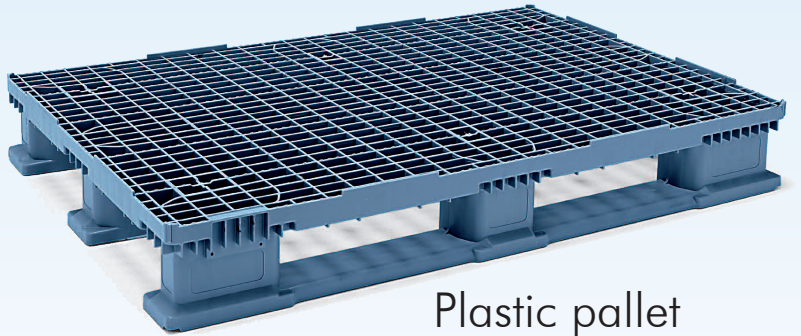


BoxMec

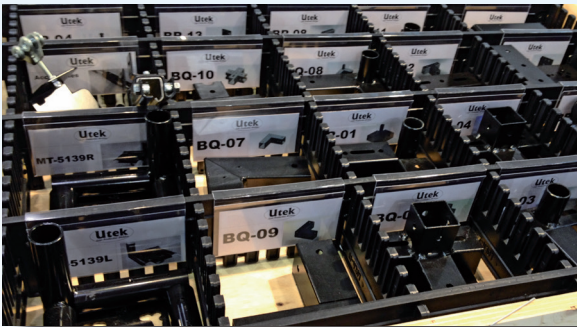
Big Box



Madia Boxes



Plastic pallet



Divisors



Roll Pallet

LOGISTICS

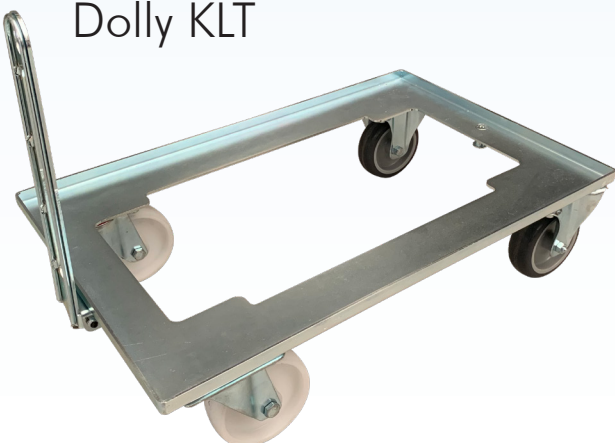


Electric tractors



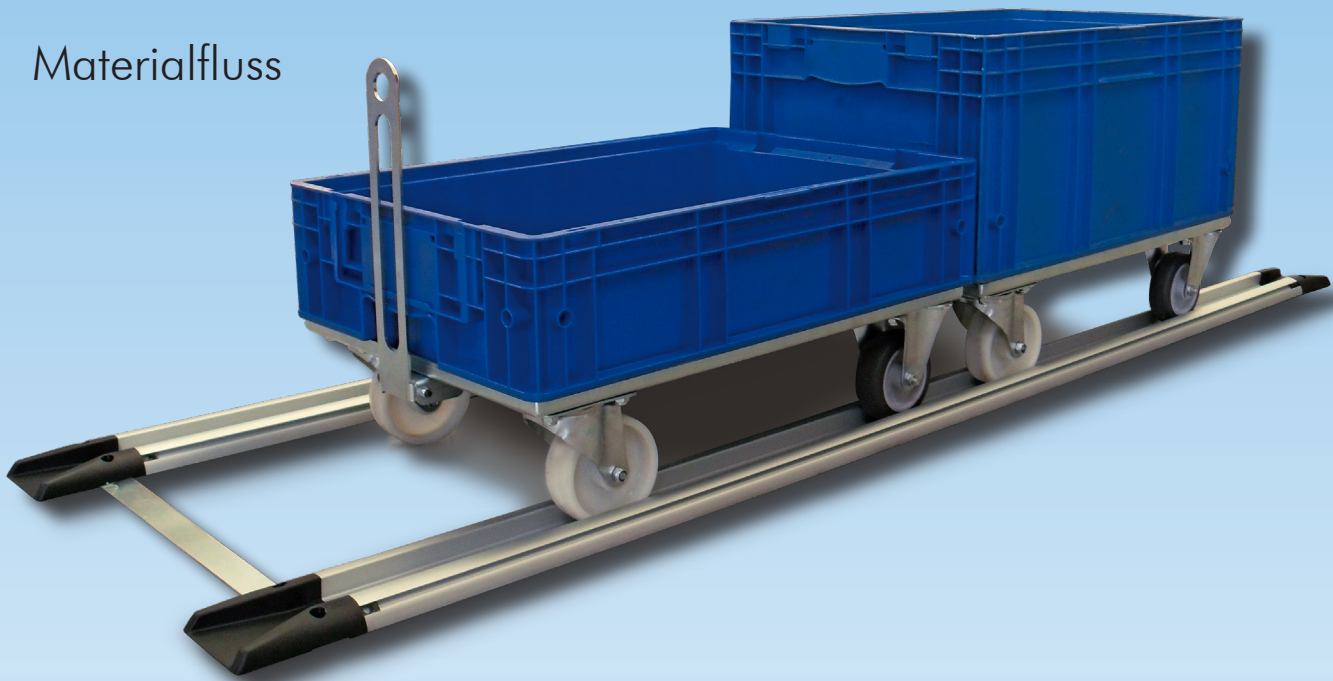
Steering Axes

Dolly KLT

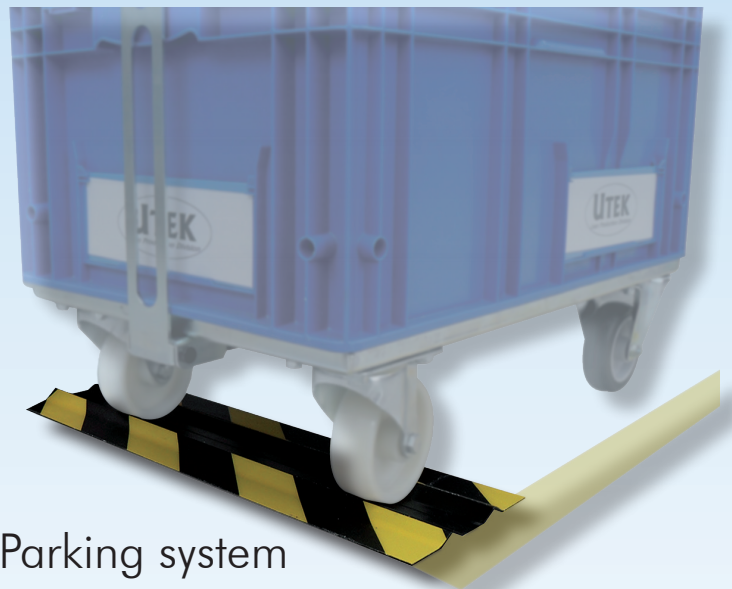


Dolly Pallet

Materialfluss



- Time optimization
- Speed
- Precision



Parking system



Milk Run



Vagon dolly



- Ergonomics
- Safety
- Functionality

HANDLING

Lift trolley



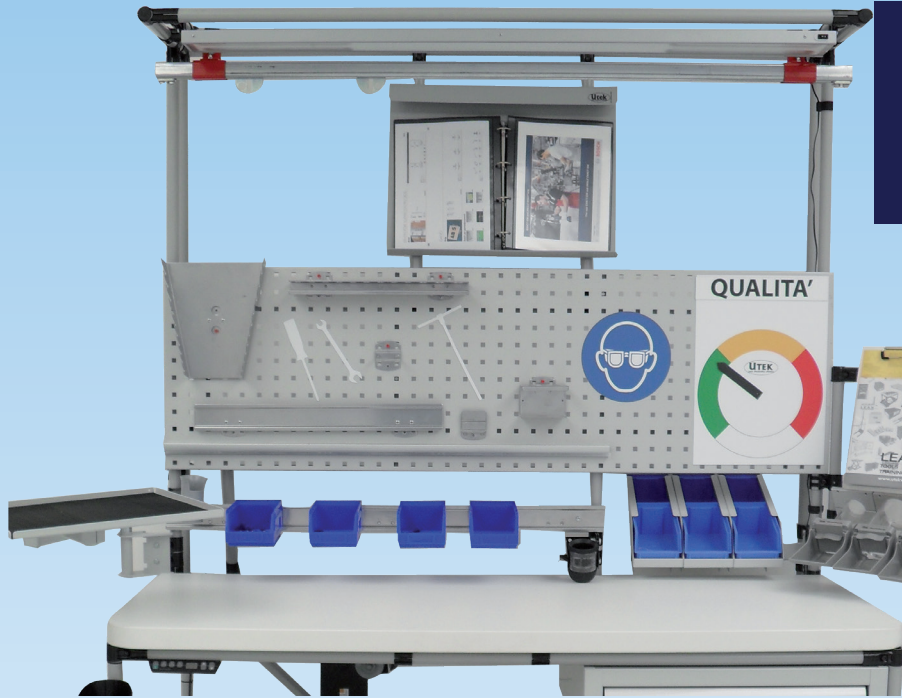
KLT Lifter



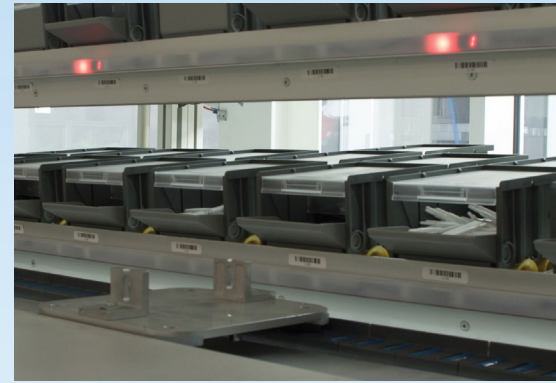
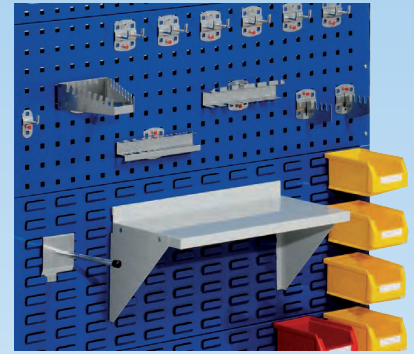
Pallet lifter



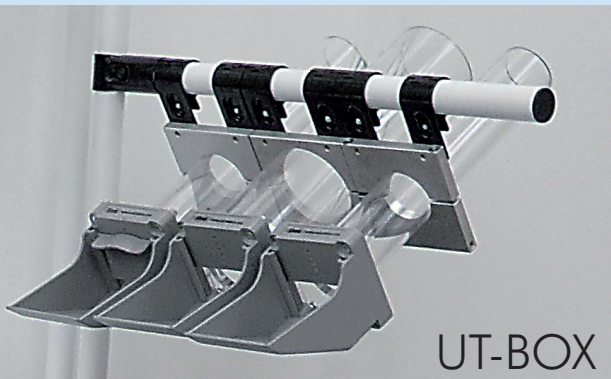
Lifting tables



- Quality
- Anti-fatigue
- ESD



Pick to Light



UT-BOX

ERGONOMICS



Ergonomic mats

Ergonomic Chairs

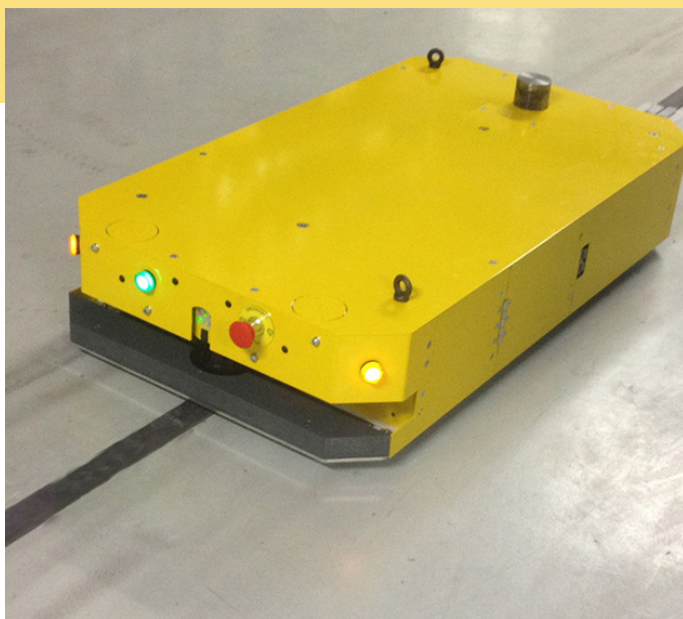


Quality station



UtDrive

The only AGV of its kind



UtDrive is a flexible system that can be setup for logistic needs of any kind. It is aimed at the optimisation and automation of production processes. With its compact size it fits any kind of pre-existing leading to an enormous saving.

UtDrive is a perfect high load capacity and towing vehicle.

It can be used with pre-existing routes based on magnetic or coloured stripes.

The system uses a Wi-Fi connexion that allows it to be constantly monitored and controlled from every place of the factory.

If an Internet connexion is available, UtDrive can be also remoted-controlled.

Advantages

- Status notifications by email and acoustic/optical signals
- Compact size
- Automatic load and release system
- Wireless programming
- Magnetic and coloured stripe recognition
- Optimal stopping accuracy
- Entirely modular and customizable
- Diagnosis and monitoring through smartphone
- Economically competitive
- Route automatic recognition
- Quick battery change
- Possibility of usage with already existing routes



TECHNICAL DATA

	UtDrive
Max. Speed	40m/min
Traction	700kg
Load-capacity	400kg
Steering	Magnetic Tape
Operating voltage	24Vdc
Batteries	2x33Ah (Optional 2x120 Ah)
Size	1100x600x220mm
Weight	105kg

www.utdrive.com



Utek srl - Via Luciano Lama, 8 - Villa Argine
42023 Cadelbosco di Sopra (RE) - Italy
Tel. +39.0522.958945 - Fax +39.0522.912181
infoutekvision.com - www.utekvision.com